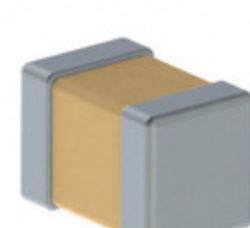


C0805X682KMGECAUTO7210



Part Number: C0805X682KMGECAUTO7210
Manufacturer: KEMET
Description: CAP CER 0805 6.8NF 63V C0G 10%
Data sheet: [ESD, COG Dielectric](#)

RoHS Status: Lead free / RoHS Compliant
Ship From: Hong Kong
Shipment Way: DHL/Fedex/TNT/UPS/EMS

Images are for reference only.
 See Product Specifications for product details.
 Buy C0805X682KMGECAUTO7210 with confidence from
 Component-World.HK, 1 Year Warranty

[Request For Quotation](#)

PRODUCT PARAMETER			
Part Number	C0805X682KMGECAUTO7210	Manufacturer	KEMET
Description	CAP CER 0805 6.8NF 63V C0G 10%	Lead Free Status / RoHS Status	Lead free / RoHS Compliant
Quantity Available	1016083 pcs	Data sheet	ESD, COG Dielectric
Category	Capacitors	Voltage - Rated	63V
Tolerance	±10%	Thickness (Max)	0.055" (1.40mm)
Temperature Coefficient	C0G, NP0	Size / Dimension	0.079" L x 0.049" W (2.00mm x 1.25mm)
Series	X	Ratings	AEC-Q200
Packaging	Tape & Reel (TR)	Package / Case	0805 (2012 Metric)
Operating Temperature	-55°C ~ 125°C	Mounting Type	Surface Mount, MLCC
Moisture Sensitivity Level (MSL)	1 (Unlimited)	Manufacturer Standard Lead Time	11 Weeks
Lead Style	-	Lead Spacing	-
Lead Free Status / RoHS Status	Lead free / RoHS Compliant	Height - Seated (Max)	-
Features	Low ESL, Soft Termination	Failure Rate	-
Detailed Description	6800pF ±10% 63V Ceramic Capacitor C0G, NP0 0805 (2012 Metric)	Capacitance	6800pF
Applications	Automotive, Bypass, Decoupling, Boardflex Sensitive, ESD Protection		

Component-World.com is a Reliable Stocking Distributor of Electronic Components. We specialize in all KEMET series electronic components. We have 1016083 pieces of KEMET C0805X682KMGECAUTO7210 in stock available now. Request a quote from electronics components distributor at Component-World.com, our sales team will contact you within 24 hours.
 RFQ Email: info@Components-World.com

RELATED PRODUCTS			
	Part#: C0805X682KMREC7800 Description: CAP CER 0805 6.8NF 63V X7R 10%	Manufacturers: KEMET	RFQ
	Part#: C0805X682KMGECAUTO Description: CAP CER 0805 6.8NF 63V C0G 10%	Manufacturers: KEMET	RFQ
	Part#: C0805X682KAREC Description: CAP CER 0805 6.8NF 250V X7R	Manufacturers: KEMET	RFQ
	Part#: C0805X682M1GEC7210 Description: CAP CER 0805 6.8NF 100V C0G	Manufacturers: KEMET	RFQ
	Part#: C0805X682KAREC7800 Description: CAP CER 0805 6.8NF 250V X7R	Manufacturers: KEMET	RFQ
	Part#: C0805X682KMREC Description: CAP CER 0805 6.8NF 63V X7R 10%	Manufacturers: KEMET	RFQ
	Part#: C0805X682M1GECAUTO7210 Description: CAP CER 0805 6.8NF 100V C0G	Manufacturers: KEMET	RFQ
	Part#: C0805X682M1GEC7800 Description: CAP CER 0805 6.8NF 100V C0G	Manufacturers: KEMET	RFQ
	Part#: C0805X682KARECAUTO7210 Description: CAP CER 0805 6.8NF 250V X7R	Manufacturers: KEMET	RFQ
	Part#: C0805X682M1GECAUTO Description: CAP CER 0805 6.8NF 100V C0G	Manufacturers: KEMET	RFQ
	Part#: C0805X682KMREC7210 Description: CAP CER 0805 6.8NF 63V X7R 10%	Manufacturers: KEMET	RFQ
	Part#: C0805X682KAREC7210 Description: CAP CER 0805 6.8NF 250V X7R	Manufacturers: KEMET	RFQ
	Part#: C0805X682KMGECE7800 Description: CAP CER 0805 6.8NF 63V C0G 10%	Manufacturers: KEMET	RFQ
	Part#: C0805X682M1GEC Description: CAP CER 0805 6.8NF 100V C0G	Manufacturers: KEMET	RFQ
	Part#: C0805X682KMRECAUTO7210 Description: CAP CER 0805 6.8NF 63V X7R 10%	Manufacturers: KEMET	RFQ
	Part#: C0805X682KMRECAUTO Description: CAP CER 0805 6.8NF 63V X7R 10%	Manufacturers: KEMET	RFQ
	Part#: C0805X682KMGECE7210 Description: CAP CER 0805 6.8NF 63V C0G 10%	Manufacturers: KEMET	RFQ
	Part#: C0805X682KBRACTU Description: CAP CER 6800PF 630V X7R 0805	Manufacturers: KEMET	RFQ
	Part#: C0805X682KARECAUTO Description: CAP CER 0805 6.8NF 250V X7R	Manufacturers: KEMET	RFQ
	Part#: C0805X682KMGECE Description: CAP CER 0805 6.8NF 63V C0G 10%	Manufacturers: KEMET	RFQ

Related keywords for **C0805X682KMGECAUTO7210**

KEMET C0805X682KMGECAUTO7210	C0805X682KMGECAUTO7210 distributor	C0805X682KMGECAUTO7210 supplier	C0805X682KMGECAUTO7210 price
C0805X682KMGECAUTO7210 download datasheet	C0805X682KMGECAUTO7210 datasheet	C0805X682KMGECAUTO7210 stock	buy C0805X682KMGECAUTO7210
KEMET C0805X682KMGECAUTO7210	Kemet [MIL] C0805X682KMGECAUTO7210		